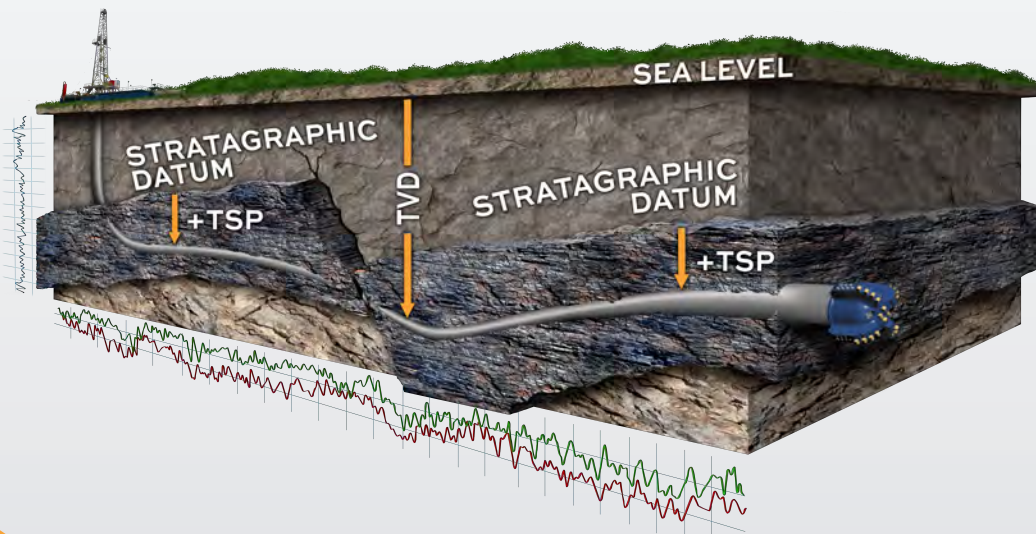




Since 1994, HSI has offered premier geosteering services proven to maximize oil and gas production from horizontal drilling programs

- Over 12000 laterals geosteered throughout the major unconventional plays in North American
- A staff of experts averaging over 24 years of E&P and 12 years of geosteering experience
- 24/7 monitoring and support throughout the drilling process
- Unlimited comprehensive reports
- Free access to LNN geosteering software and support with our service



Our team has experienced just about every horizontal drilling situation imaginable. Learn what many operators have come to know. Rely on the trusted experts of HSI.

972.416.1626

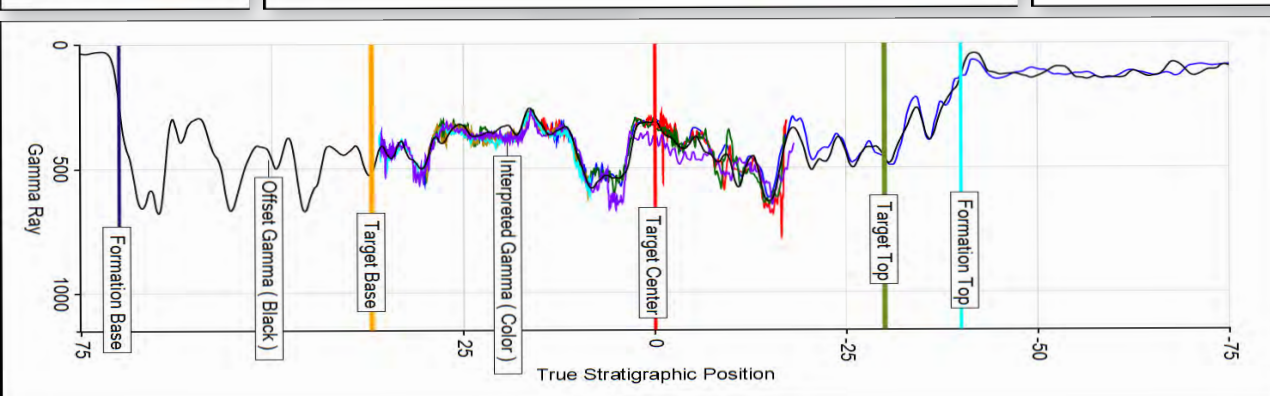
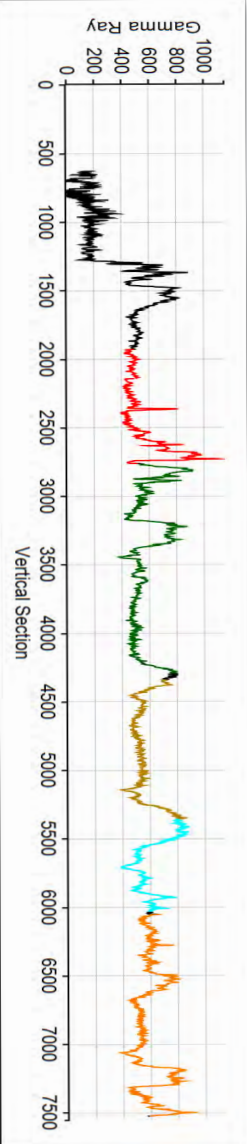
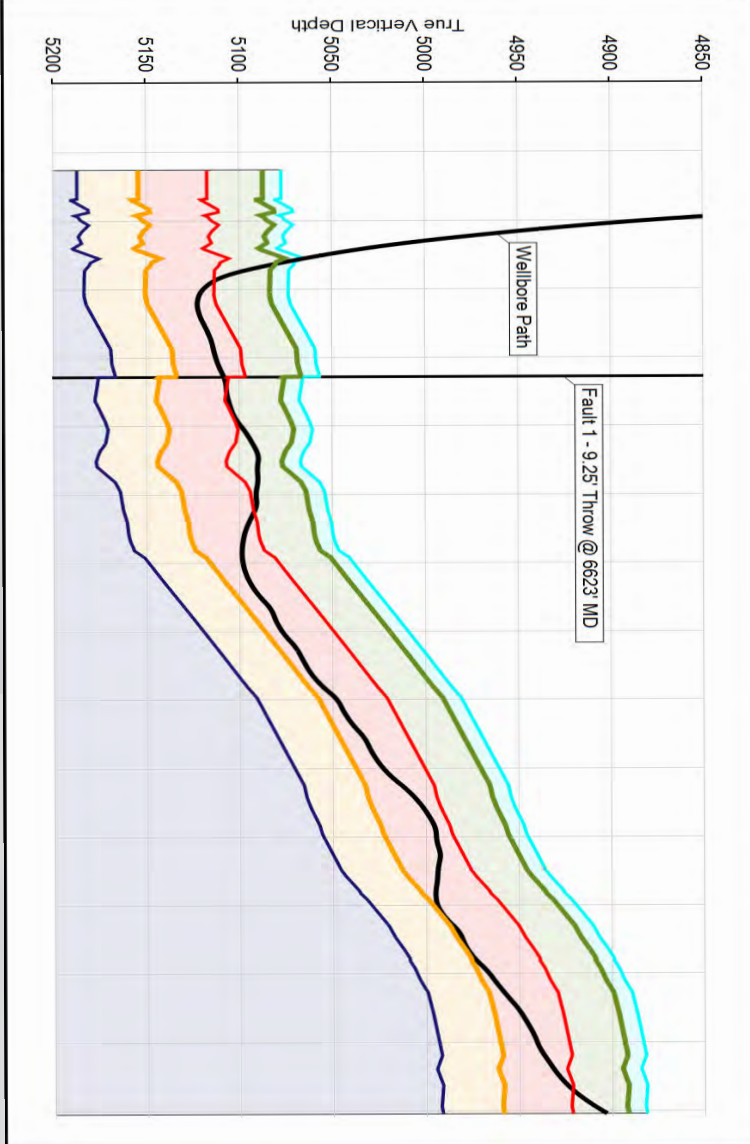
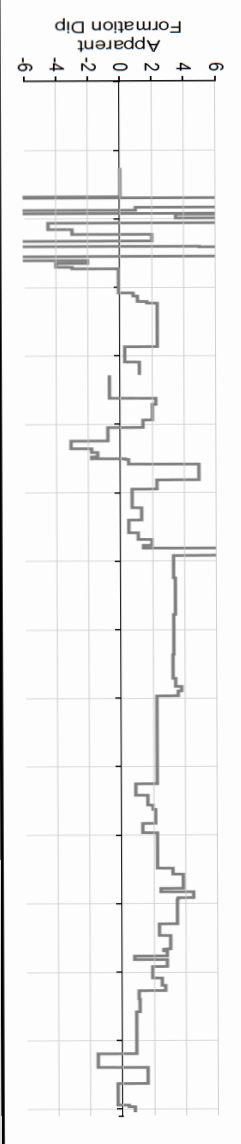
sales@hsigeosciences.com

15851 Dallas Pkwy. Ste. 1250, Addison, TX 75001

PREMIER GEOSTEERING SERVICES

WOODFORD DEMO EX #1 DD
County County OK
API Code: 1234567890

Report for 9/14/2018 3:42 PM: At the last analyzed depth of 12014' MD, the wellbore is interpreted to be 18.22' above the Target Line Datum and traversing up section. Apparent formation dip is 0.80 degrees Southerly. Last Survey: 11961' MD, 96.6 deg. Inc, 356.8 deg. Azi 7469.51' VS 4909.34' TVD



972.416.1626

www.hsigeosciences.com • sales@hsigeosciences.com

15851 Dallas Pkwy. Ste. 1250, Addison, TX 75001

